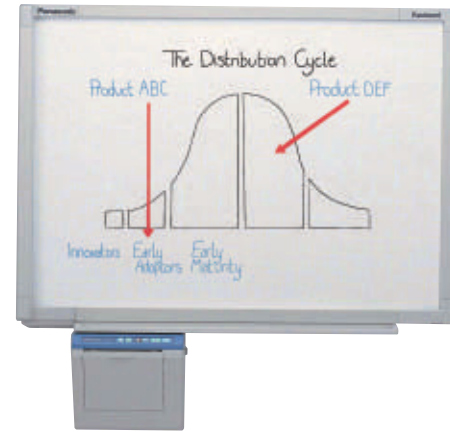


Panaboard™

Improves your Presentations and Meetings

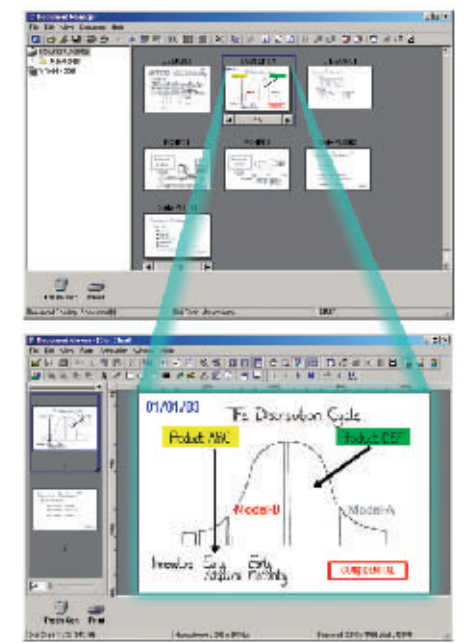
Panasonic®



PC Interface

Document Management System

Panaboard UB-5315, UB-5815 and UB-5310 comes with utility software that consists of Document Manager and Document Viewer. The meeting contents on the Panaboard screen will become meeting minutes with some annotation by Document Viewer function. The Document Manager makes it easy to file and distribute the meeting minutes quite easily. Supported saving file format is BMP, TIFF, PNG and PDF.



The Document Manager makes it easy to file and distribute the meeting minutes quite easily.

The scanned image is monochrome. The annotation function is used to make the coloured text.

Used for

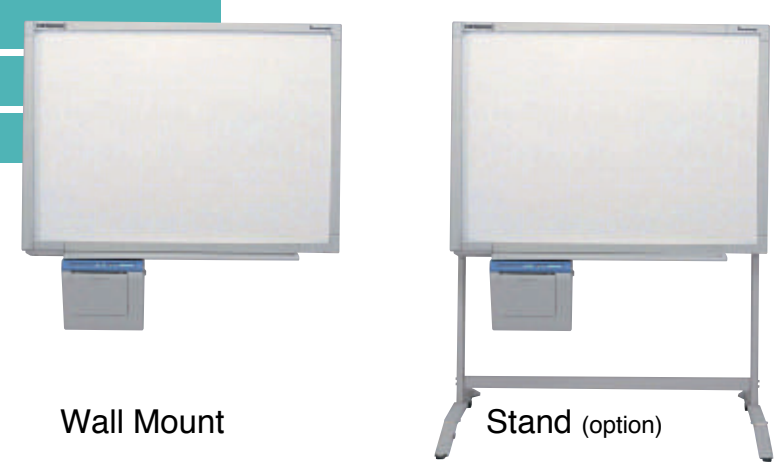
- Seminars
- Meetings
- Brain Storming
- Scheduling
- Training
- Copying charts and graphs

- Panaboard UB-5315, UB-5815, UB-5310**
- Our range of Panaboards come with an integral printer for easy-operation.
 - Plain paper printing with multiple copies. (except UB-5310)
 - Panaboard can work as a PC printer.
 - Panaboard can be controlled from PC.
 - Panaboard keeps 100% audience attention and increases participation.
 - Panaboard increases efficiency and reduces meeting time.
 - Panaboard can be wall-mounted or used with floor-stand option.
 - Panaboard provides multi-copies, logic control and PC interface.



All-in-one slim design No protruding paper tray.

- UB-5315** Endless 2 Screen / Standard size Standard or recycled paper
- UB-5815** Endless 2 Screen / Wide size Standard or recycled paper
- UB-5310** Endless 2 Screen / Standard size Thermal paper



Wall Mount

Stand (option)



TWAIN Driver

By just one click, you can scan the image on the Panaboard screen as image data to your computer and from your computer, you can control the Panaboard function just like operating the Panaboard control panel.

Printer Driver

The Panaboard can work as a PC printer. In a meeting, if you need to print out some documents, the Plug & Play of USB makes it easy to print out documents from the Panaboard.

